

QP-220-V

QUIET POWER GENERATOR
RENTAL SERIES

SWP
Southwest Products



Powered by **VOLVO PENTA**

Complete Power Solutions

QP-220-V

Standby Rating: 244 kVA / 195 kW

Prime Rating: 220 kVA / 176 kW

Southwest Products QP-220-V diesel generator is engineered from the ground-up for reliability, durability, and ease-of-use.

Built with a Volvo Penta Tier 4 Final engine and a compact, rugged design, the QP-220-V is a cost-effective alternative to larger units.

RELIABLE, STURDY, AND ENVIRONMENTALLY FRIENDLY

- Heavy-duty construction, components and paint
- Reliable 4-cycle, indirect injection, diesel engine
- Volvo Penta Tier 4 Final engine (50 state compliant)
- Oversized alternator with PMG for better motor starting
- Heavy gauge, powder coated, lockable enclosure
- Dual containment fuel cell with containment basin
- 2 year or 2,000 hour limited warranty
- Available with or without optional trailer
- Designed, engineered and assembled in USA

EXTREMELY QUIET AND FUEL EFFICIENT

- Sound attenuation for superior noise reduction
- Common rail fuel system with gear driven fuel feed pump
- Large capacity fuel cell for extended run time



FULL FEATURED CONTROL PANEL

- Digital controller with single-button start/stop and 2 wire auto-start
- Full capacity power outlets with lugs and outlets for customer connections
- Circuit breakers for GFCI and twist lock receptacles
- Voltage selection switch with utility power in all voltage modes

Contact SWP for Pricing and Availability

Surprise, AZ
602.269.3581

Signal Hill, CA
562.424.0913

Galt, CA
209.245.6000

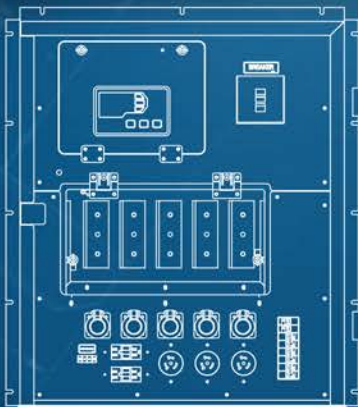
Houston, TX
832.957.6400

www.SouthwestProducts.com

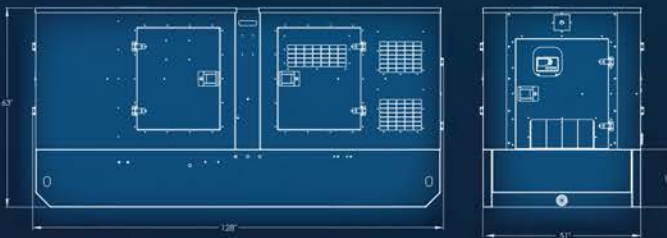
EASY TO USE CONNECTION AND SERVICE POINTS

- Up to 500 hour service intervals
- Multi-voltage switch with utility outlet power in all voltage modes
- SWP Tough Series TG410 digital genset controller
- Digital engine/generator controller with single button start/stop and 2 wire auto-start
- Optional single axle trailer 79" (W) x 186" (L)
- Custom paint and branding options available
- Single point lift

Generator Output Panel



Dimensions



TECHNICAL SPECIFICATIONS

Model	QP-220-V
Voltages	120/240 120/208 277/480
Standby Rating	244 kVA / 195 kW _e
Prime Rating	220 kVA / 176 kW _e
Engine Model	Volvo Penta TAD873VE
Alternator	Mecc Alte/STAMFORD
Sound dBA level @ 23 ft.	72 dBA
Main Line Circuit Breaker	800 Amps

ENCLOSURE SPECIFICATIONS

Weight - Dry	6,950 lb
Length With Trailer	231"
Width With Trailer	82"
Height With Trailer	85"
Weight With Trailer	8,540 lb
Weight Ready to Run	11,147 lb

ENGINE SPECIFICATIONS

Engine Mfg	Volvo Penta
Model Number	TAD873VE
Prime Output HP (gross)	269
Standby Output HP (gross)	299
Emissions Certification	Tier 4 Final

ALTERNATOR SPECIFICATIONS*

277/480 Volt Prime Amps	236.8
277/480 Volt Standby Amps	293.1
120/208 Volt Prime Amps	608.9
120/208 Volt Standby Amps	676.6
120/240 Volt Prime Amps	484.0
120/240 Volt Standby Amps	536.3

*125/40 C Temp Rise Class H Insulation

FUEL CONSUMPTION

Fuel Tank Capacity - Gallons	330
Fuel Consumption at Prime Rating	12.5 gal/h
25% load	-
50% load	6.2 gal/h
75% load	9.4 gal/h
100% load	12.5 gal/h
DEF Tank Capacity	70L