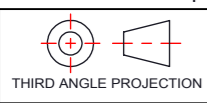


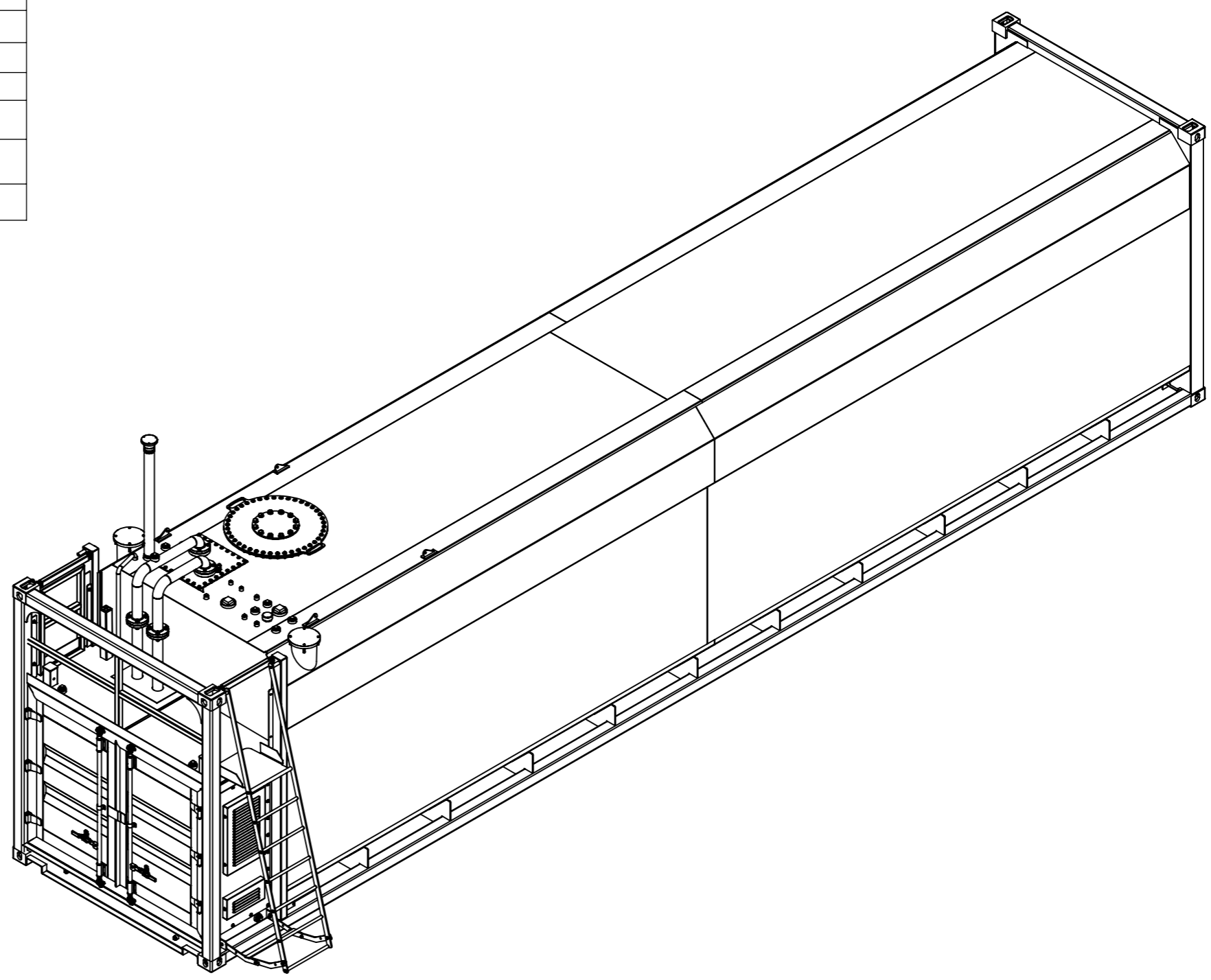
1 2 3 4 5 6 7 8



This drawing and the information it contains is the property of Western Global Australia Pty Limited., and must be returned upon request. It must not be copied directly, nor indirectly, placed in the hands of others, nor used in any way that is detrimental to the interests of Western Global Australia Pty Limited. © COPYRIGHT

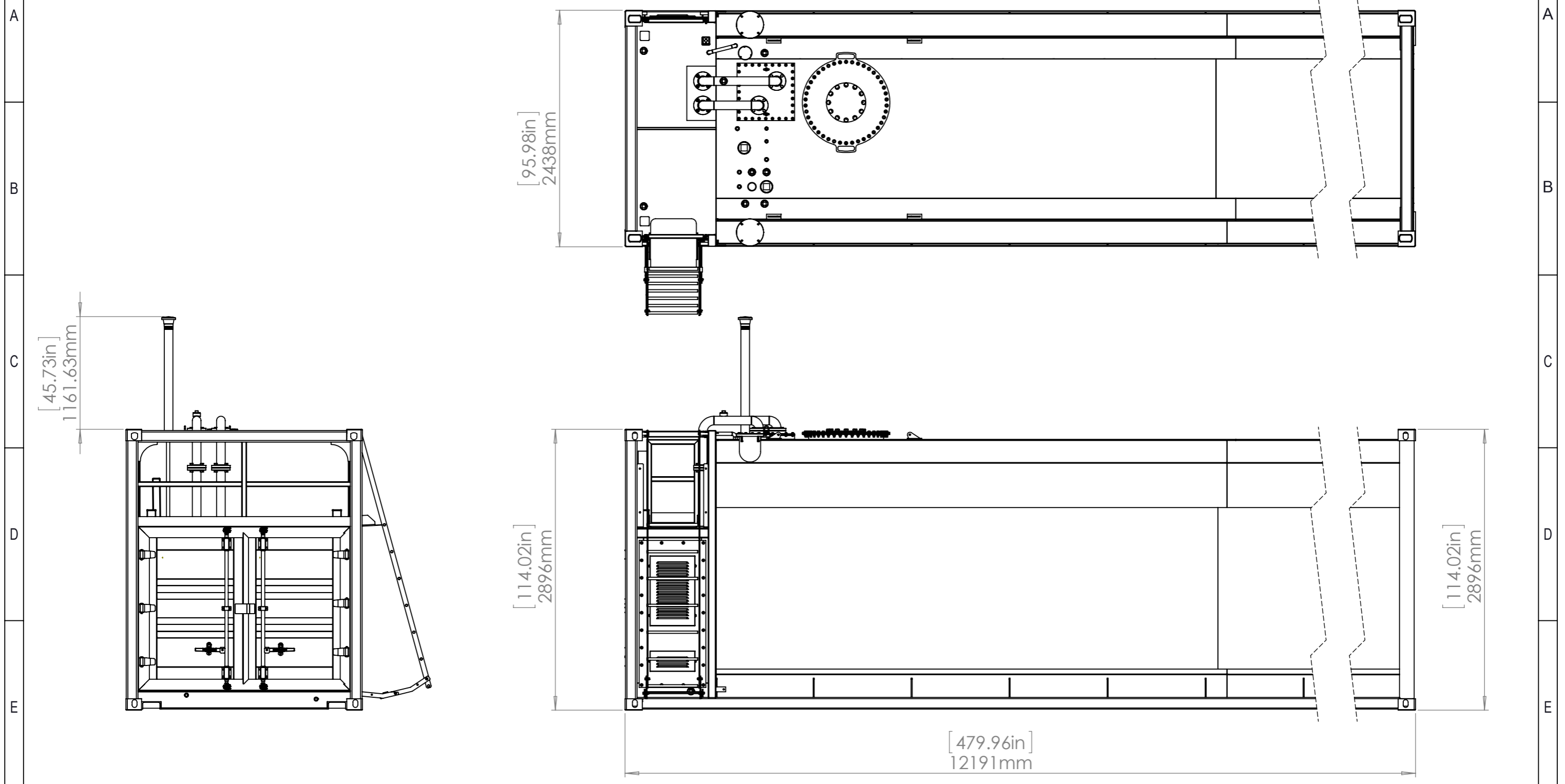
| LIQUID VOLUME | LITRES | US GAL | UK GAL |
|------------------------|---------|--------|--------|
| BRIMFULL CAPACITY | 68800 | 18175 | 15134 |
| SAFE FILL CAPACITY | 65700 | 17356 | 14452 |
| | | | |
| WEIGHT | kg | Lbs | |
| WEIGHT EMPTY | 11185.6 | 24660 | |
| WEIGHT FILLED (DIESEL) | 67688 | 149226 | |

NOTE:
THIS TANK IS DESIGNED TO COMPLY WITH THE FOLLOWING STANDARDS: UL142, CAN/ULC S601, AS1692, AS1940, AS1657



| REV | REVISION DESCRIPTION | DATE | BY | CHECK | APP'D | GENERAL TOLERANCE | PROJECT ID | PROJECT | | | |
|-----|-------------------------|-----------|----|-------|-------|--|--|-------------|-----------------|----------------------------------|----------|
| | | | | | | 0.00 ±0.005 0.0 ±0.05 0 ±0.5 OVER 100 TO 500 ±1 OVER 500 TO 5000 ±2 OVER 5000 TO 10000 ±5 ANGLES ±0.5° | SD | P69 | | | |
| | | | | | | SURFACE FINISH FABRICATION FABRICATION MACHINING | TITLE P-SERIES TANK -P69 | | | | |
| 2 | UPDATED DRAWING VIEWS | 07-DEC-16 | LS | TD | MG | MATERIAL : SEE PARTS | SCALE 1:45 | PAPER A3 | SHEET No 1/4 | DRAWING No. WG-SD-PSER-GA-P69 | REV 2 |
| 1 | ISSUED FOR CONSTRUCTION | 28-OCT-16 | LS | TD | MG | WEIGHT (KG) : 11185.6 | 3 Billy Mac Place, Parkes, NSW 2870 Australia. p + 61 2 6863 6700 f + 61 2 68622 1233 | | | | |

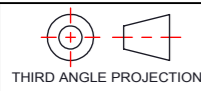
1 2 3 4 5 6 7 8



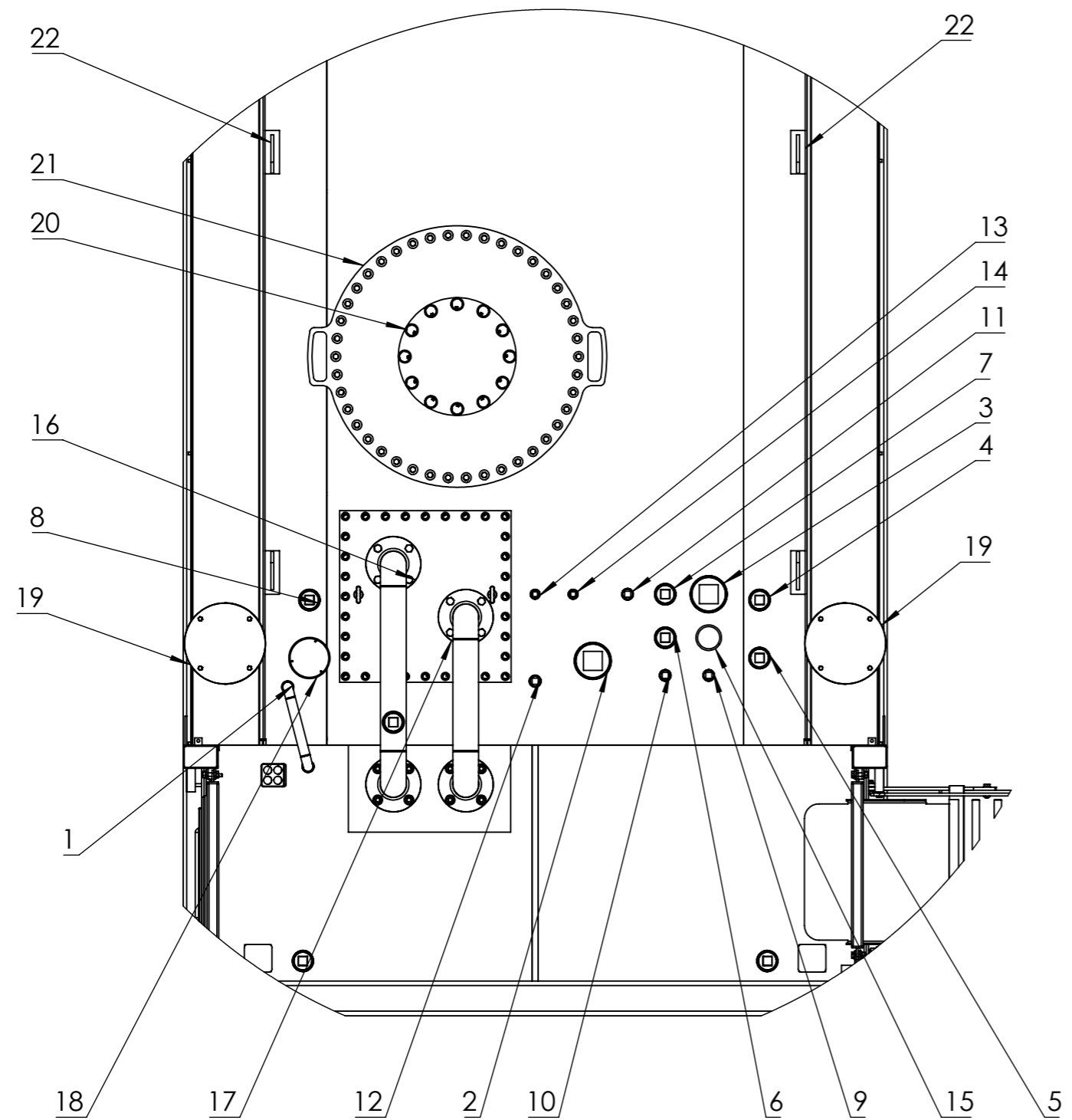
| REV | REVISION DESCRIPTION | DATE | BY | CHECK | APP'D | GENERAL TOLERANCE | PROJECT ID | PROJECT | | | |
|-----|-------------------------|-----------|----|-------|-------|--|--|-------------|-----------------|----------------------------------|----------|
| | | | | | | 0.00 ±0.005 0.0 ±0.05 0 ±0.5 OVER 100 TO 500 ±1 OVER 500 TO 5000 ±2 OVER 5000 TO 10000 ±5 ANGLES ±0.5° | SD | P69 | | | |
| | | | | | | SURFACE FINISH FABRICATION MACHINING | TITLE P-SERIES TANK -P69 | | | | |
| 2 | UPDATED DRAWING VIEWS | 07-DEC-16 | LS | TD | MG | MATERIAL : SEE PARTS | SCALE 1:40 | PAPER A3 | SHEET No 2/4 | DRAWING No. WG-SD-PSER-GA-P69 | REV 2 |
| 1 | ISSUED FOR CONSTRUCTION | 28-OCT-16 | LS | TD | MG | WEIGHT (KG): 11185.6 | 3 Billy Mac Place, Parkes, NSW 2870 Australia. p + 61 2 6863 6700 f + 61 2 68622 1233 | | | | |

1 2 3 4 5 6 7 8





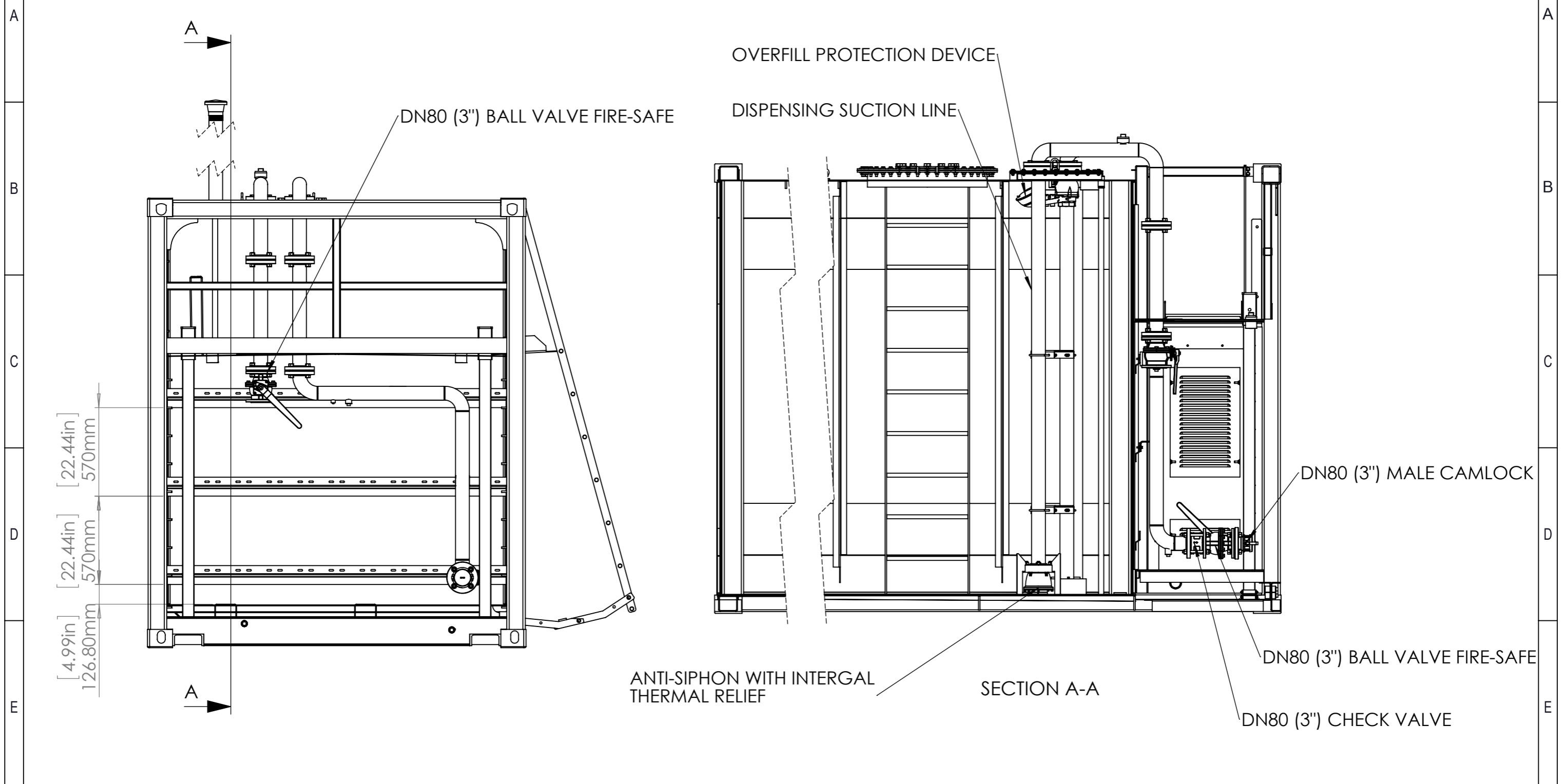
This drawing and the information it contains is the property of Western Global Australia Pty Limited., and must be returned upon request. It must not be copied directly, nor indirectly, placed in the hands of others, nor used in any way that is detrimental to the interests of Western Global Australia Pty Limited. © COPYRIGHT



| TAG | PORT ID | SIZE |
|-----|-------------------------------|-----------------|
| 1 | AIR RETURN | 1IN NPTF |
| 2 | SPARE | 4IN NPTF |
| 3 | SPARE | 4IN NPTF |
| 4 | SPARE | 2IN NPTF |
| 5 | SPARE | 2IN NPTF |
| 6 | INTERSTITIAL DIP | 2IN NPTF |
| 7 | SPARE | 2IN NPTF |
| 8 | SPARE | 2IN NPTF |
| 9 | SPARE | 1IN NPTF |
| 10 | SPARE | 1IN NPTF |
| 11 | SPARE | 1IN NPTF |
| 12 | WATER EXTRACTION | 1IN NPTF |
| 13 | SPARE | 3/4IN NPTF |
| 14 | SPARE | 3/4IN NPTF |
| 15 | DIP | 2.5IN NPTM |
| 16 | DISPENSING PORT | 3IN CL150 RF FL |
| 17 | FILL-IN PORT | 3IN CL150 RF FL |
| 18 | FREE TO AIR VENT | 3IN NPTF |
| 19 | INTERSTITIAL VENT | 8IN |
| 20 | EMERGENCY VENT | 10IN |
| 21 | MANWAY | Ø 600mm |
| 22 | LUG FOR TRAVEL RESTRAINT LINE | - |

| REV | REVISION DESCRIPTION | DATE | BY | CHECK | APP'D | GENERAL TOLERANCE | PROJECT ID | PROJECT | | | |
|-----|-------------------------|-----------|----|-------|-------|--|--|-------------|-----------------|----------------------------------|----------|
| | | | | | | 0.00 ±0.005 0.0 ±0.05 0 ±0.5 OVER 100 TO 500 ±1 OVER 500 TO 5000 ±2 OVER 5000 TO 10000 ±5 ANGLES ±0.5° | SD | P69 | | | |
| | | | | | | SURFACE FINISH FABRICATION MACHINING | TITLE P-SERIES TANK -P69 | | | | |
| 2 | UPDATED DRAWING VIEWS | 07-DEC-16 | LS | TD | MG | MATERIAL : SEE PARTS | SCALE 1:20 | PAPER A3 | SHEET No 3/4 | DRAWING No. WG-SD-PSER-GA-P69 | REV 2 |
| 1 | ISSUED FOR CONSTRUCTION | 28-OCT-16 | LS | TD | MG | WEIGHT (KG): 11185.6 | 3 Billy Mac Place, Parkes, NSW 2870 Australia. p + 61 2 6863 6700 f + 61 2 68622 1233 | | | | |





| REV | REVISION DESCRIPTION | DATE | BY | CHECK | APP'D | GENERAL TOLERANCE | PROJECT ID | PROJECT | | | |
|-----|-------------------------|-----------|----|-------|-------|--|--|-------------|-----------------|----------------------------------|----------|
| | | | | | | 0.00 ±0.005 0.0 ±0.05 0 ±0.5 OVER 100 TO 500 ±1 OVER 500 TO 5000 ±2 OVER 5000 TO 10000 ±5 ANGLES ±0.5° | SD | P69 | | | |
| | | | | | | SURFACE FINISH FABRICATION FABRICATION MACHINING | TITLE MAIN ASSEMBLY-P69 | | | | |
| 2 | UPDATED DRAWING VIEWS | 07-DEC-16 | LS | TD | MG | MATERIAL : SEE PARTS | SCALE 1:25 | PAPER A3 | SHEET No 4/4 | DRAWING No. WG-SD-PSEB-GA-P69 | REV 2 |
| 1 | ISSUED FOR CONSTRUCTION | 28-OCT-16 | LS | TD | MG | WEIGHT (KG): 11185.6 | 3 Billy Mac Place, Parkes, NSW 2870 Australia. p + 61 2 6863 6700 f + 61 2 68622 1233 | | | | |